



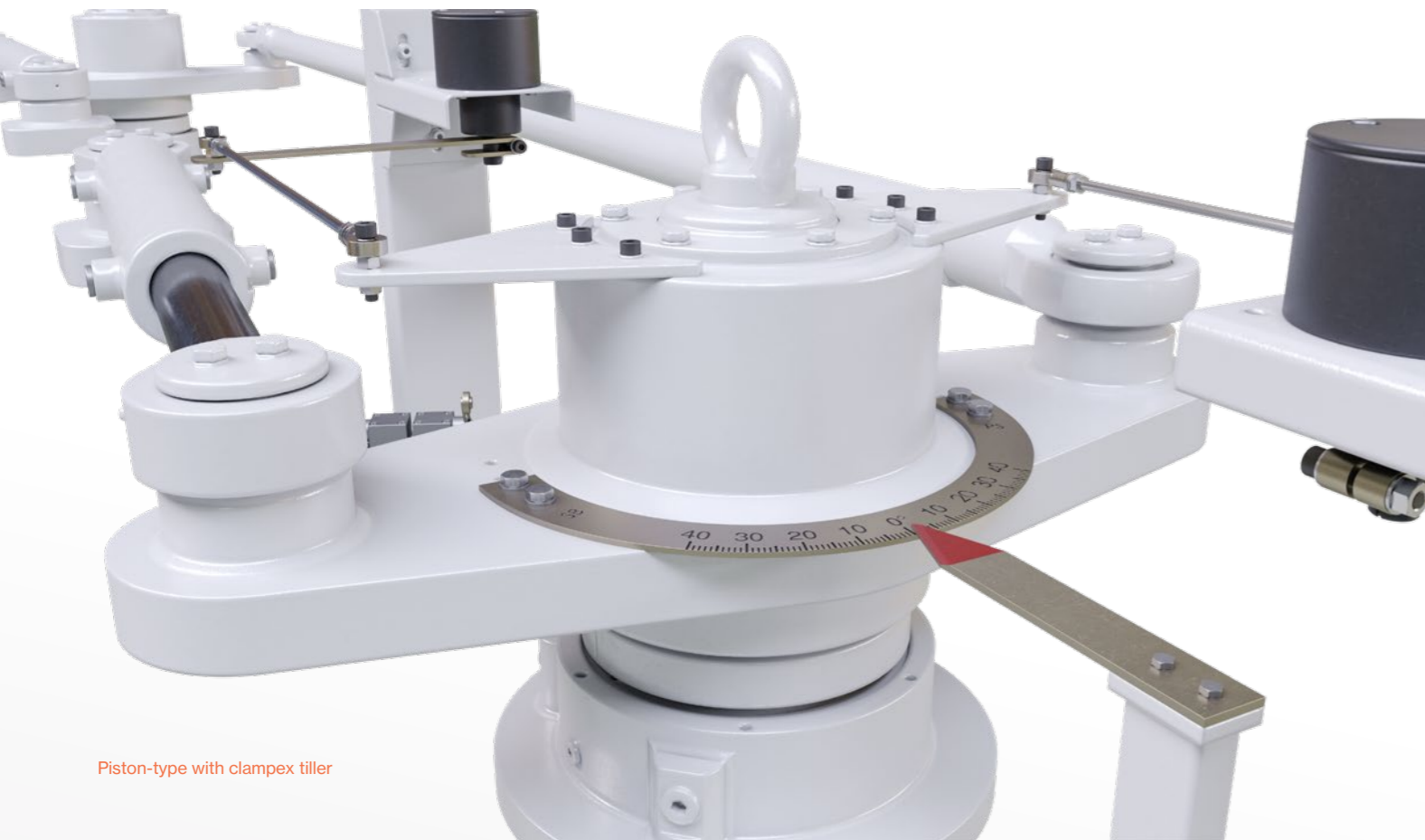
# Seagoing steering systems

SETTING THE COURSE

  
MARINE SYSTEMS  
**VAN DER VELDEN**<sup>®</sup>  
REGISTERED TRADEMARK OF DAMEN MARINE COMPONENTS

**DAMEN**  
MARINE COMPONENTS

# Piston-type



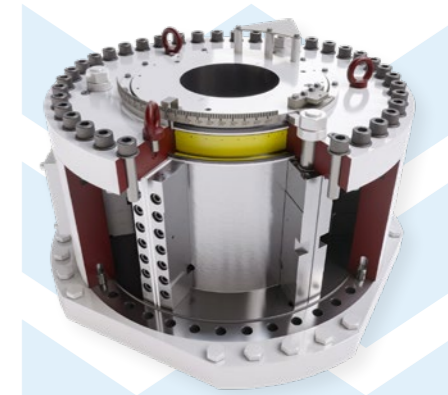
Piston-type with clampex tiller

## Van der Velden® COMMANDER™ rotary vane

The COMMANDER™ rotary vane is the definition of compact. It has a builtin rudder carrier, serving as an all-in-one steering solution. This steering system is available with two and three vane options.

is completely standardised and is suitable for vessels with a rudder torque range from 40 up to 1600 kNm.

The self-aligning sealing system of the COMMANDER™ rotary vane assures a fixed connection and high temperature resistance. This steering system



BRV1000-3 cutaway



BRV1000-3

### KEY FEATURES

- › Compact design
- › Steering angles: two vanes up to 65°, three vanes up to 45°
- › All-in-one steering solution
- › Cylindrical or conical interface
- › Complies with all classification societies

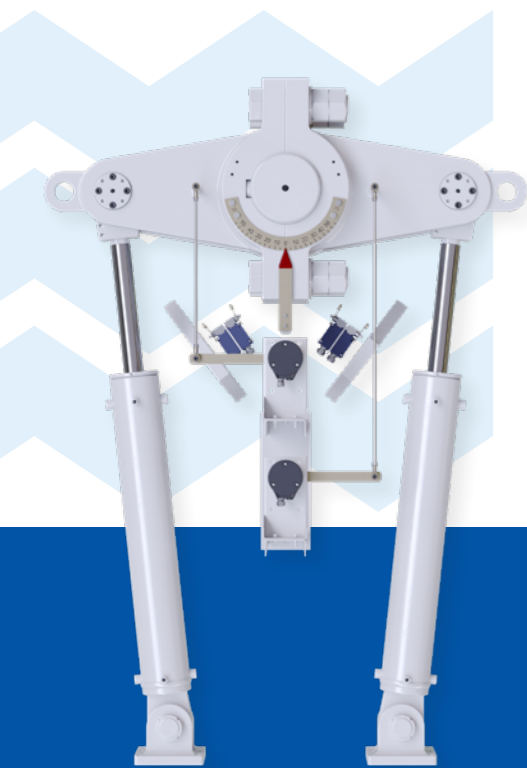
### ESPECIALLY SUITED FOR

- › Sea-going vessels with a rudder torque range from 40 up to 1600 kNm

## Van der Velden® COMMANDER™ piston-type

With its in-house cylinder design, the COMMANDER™ piston-type guarantees reliability and high quality. This steering solution offers multiple options in rudder stock connections, rudder angles, actuators and configurations, which makes the installation process efficient and space-saving.

The COMMANDER™ piston-type is available in standardised series with different configurations but can also be custom-built according to specific requirements. The rudder torque range varies from 1 up to 425 kNm with steering angles up to 65 degrees.



Piston-type with keyed splitted hub tiller

### KEY FEATURES

- › Steering angles up to 65°
- › Compact and efficient design
- › Standardised series and custom-built option
- › Complies with all classification societies
- › All types of rudder stock interfaces available (split hub, keyed tapered, friction rings etc.)

### ESPECIALLY SUITED FOR

- › Sea-going vessels with a required rudder torque up to 425 kNm

# Rotary vane

## COMMANDER™ rotary vane data sheet

Type	Max. working torque, knm	Max. stock diameter, mm	Max. rudder angle, deg.	Max. radial load, kn	Max. axial load, kn	Distance AxB, mm	Weight of actuator, kg
<b>Design with friction ring interface</b>							
BRV40-2	45	180	2x65°	500	500	580x425	710
BRV63-2	70	200	2x65°	800	400	640x470	910
BRV100-2	110	240	2x65°	900	400	760x474	1270
BRV160-2	170	280	2x65°	1100	430	860x496	1780
BRV250-2	250	320	2x65°	1100	800	985x570	2850
BRV400-3	450	380	2x45°	1700	900	1155x634	3960
<b>Design with conical connection</b>							
BRV400-2	430	360	2x65°	1500	400	1055x625	3370
BRV630-2	680	390	2x65°	2000	550	1230x694	4780
BRV630-3	650	390	2x45°	1600	650	1135x639	4020
BRV1000-3	1015	495	2x45°	2000	800	1300x744	6180
BRV1300-3	1350	495	2x45°	2000	800	1385x835	7200
BRV1400-2	1450	500	2x65° (2x70°)	2000	800	1530x915	9350
BRV1600-3	1650	550	2x45°	2750	1250	1500x880	8700





**DAMEN**  
MARINE COMPONENTS

Nijverheidsstraat 5  
3371 XE Hardinxveld-Giessendam  
The Netherlands

+31 (0)184 67 62 62  
info@damenmc.com  
damenmc.com